

Bidborough Works

Accommodation Schedule

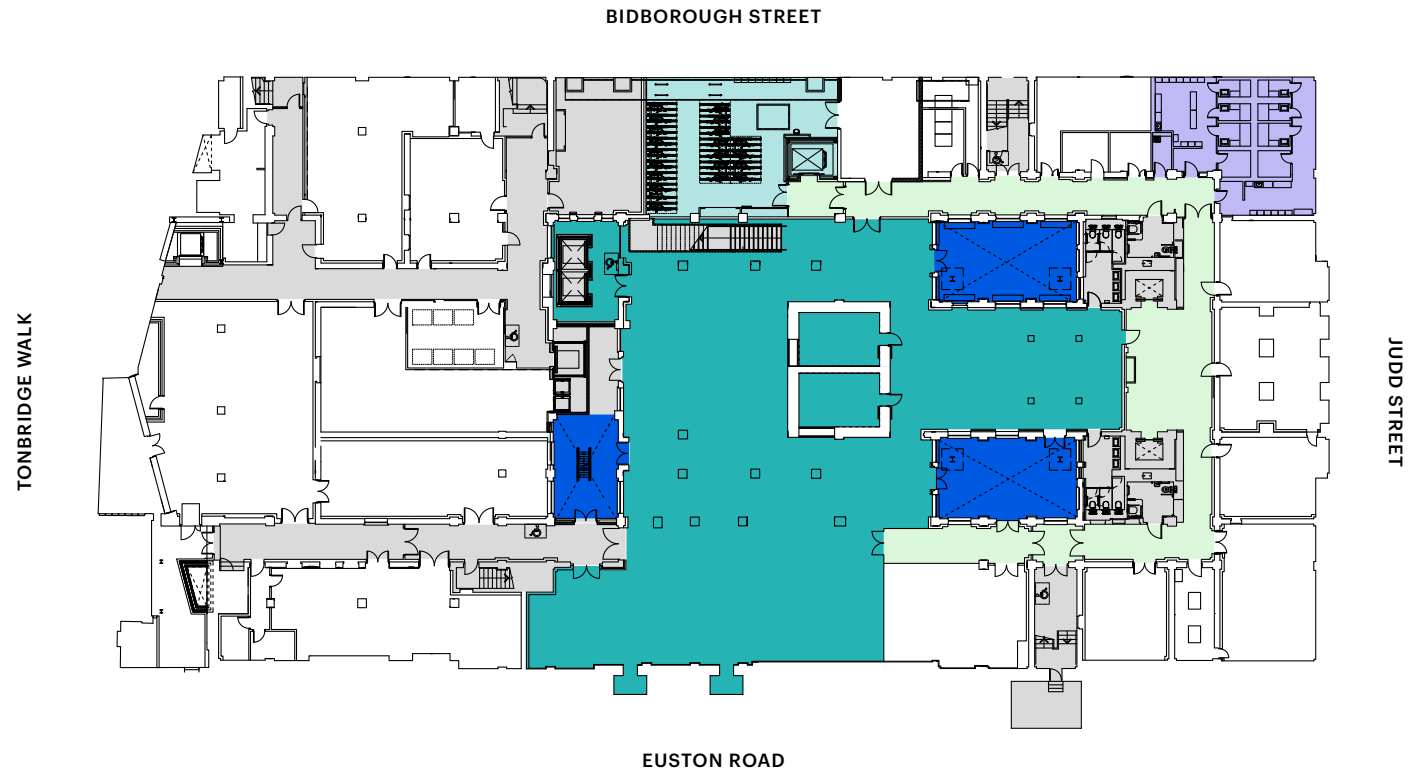
Floor	sq ft	sq m
Third	12,186	1,132
Second	15,457	1,436
Ground (Reception)	900	84
Lower Ground	8,550	794
Total	37,093	3,446

The building will be independently measured on practical completion to verify the floor areas stated above.

Affordable workspace provision
Occupiers should be aware that 20% of the total NIA is required to be SME affordable workspace.

Lower Ground

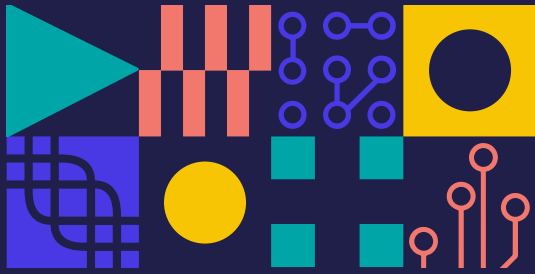
8,550 sq ft / 794 sq m



- Reception
- Office
- Communal bike racks/bike store
- Communal showers
- Terrace
- Covered outdoor spaces
- Shared corridor
- Core

Plans not to scale. For indicative purposes only.





Bidborough Works

Accommodation Schedule

Floor	sq ft	sq m
Third	12,186	1,132
Second	15,457	1,436
Ground (Reception)	900	84
Lower Ground	8,550	794
Total	37,093	3,446

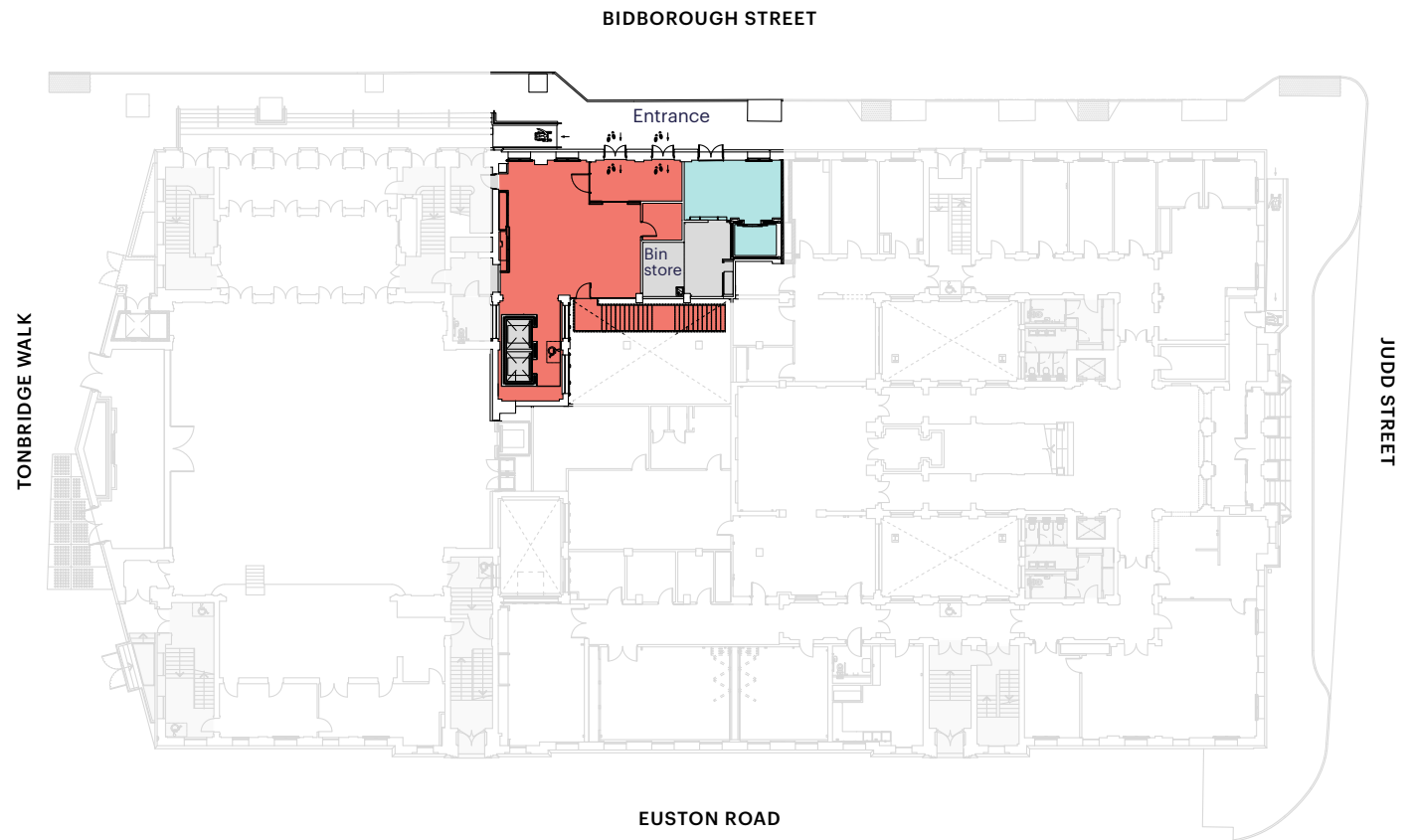
The building will be independently measured on practical completion to verify the floor areas stated above.

Affordable workspace provision

Occupiers should be aware that 20% of the total NIA is required to be SME affordable workspace.

Ground (Reception)

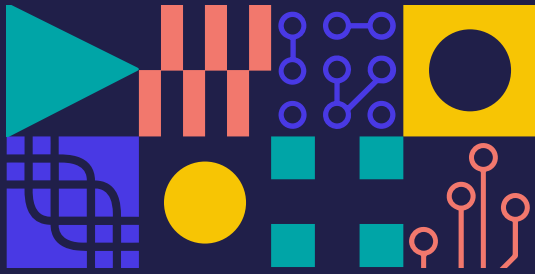
900 sq ft / 84 sq m



- Reception
- Office
- Communal bike racks/bike store
- Communal showers
- Terrace
- Covered outdoor spaces
- Shared corridor
- Core

Plans not to scale. For indicative purposes only.





Bidborough Works

Accommodation Schedule

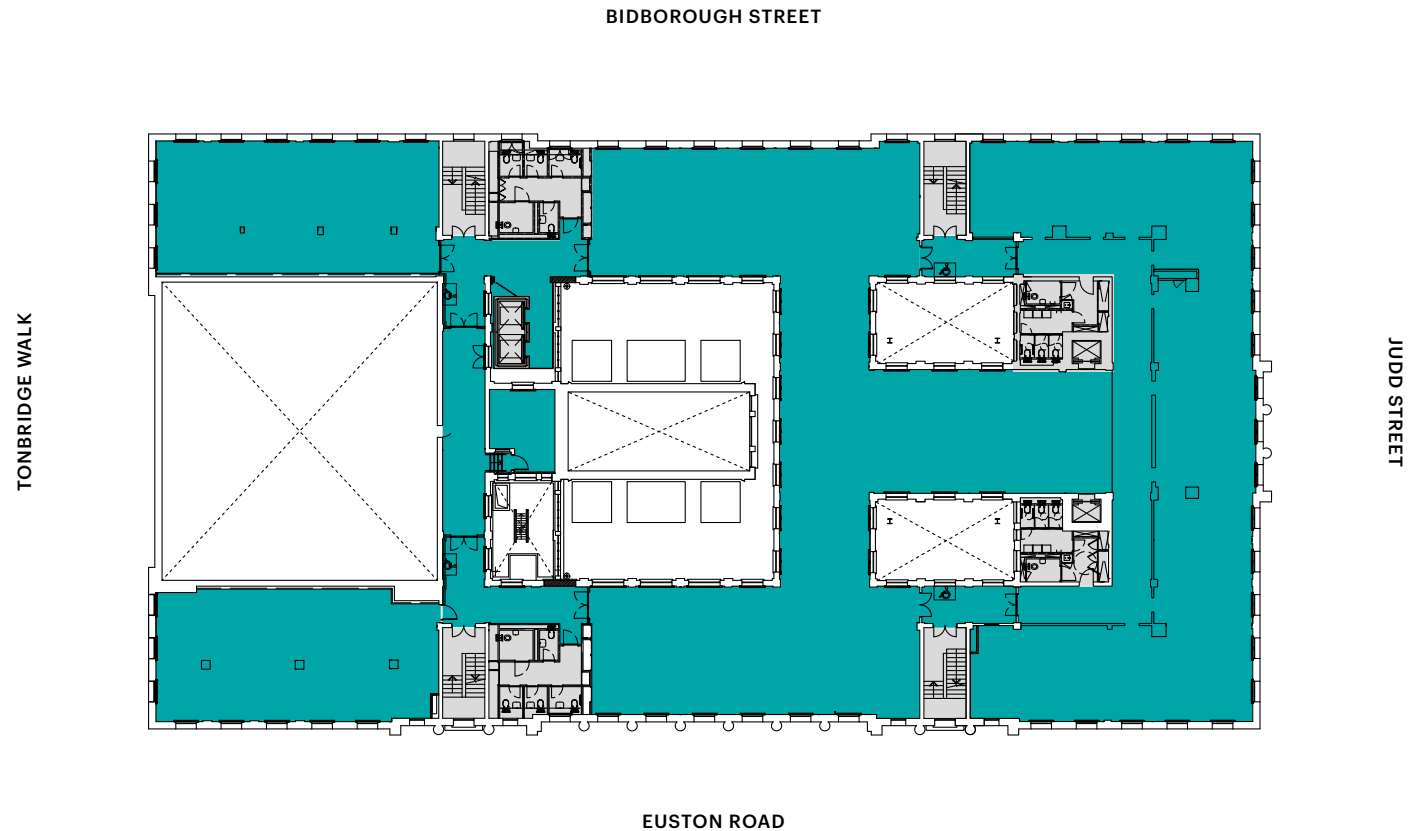
Floor	sq ft	sq m
Third	12,186	1,132
Second	15,457	1,436
Ground (Reception)	900	84
Lower Ground	8,550	794
Total	37,093	3,446

The building will be independently measured on practical completion to verify the floor areas stated above.

Affordable workspace provision
Occupiers should be aware that 20% of the total NIA is required to be SME affordable workspace.

Second

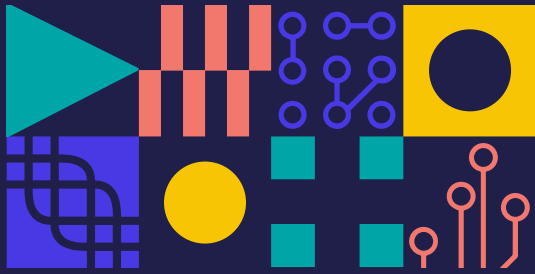
15,457 sq ft / 1,436 sq m



- Reception
- Office
- Communal bike racks/bike store
- Communal showers
- Terrace
- Covered outdoor spaces
- Shared corridor
- Core

Plans not to scale. For indicative purposes only.





Bidborough Works

Accommodation Schedule

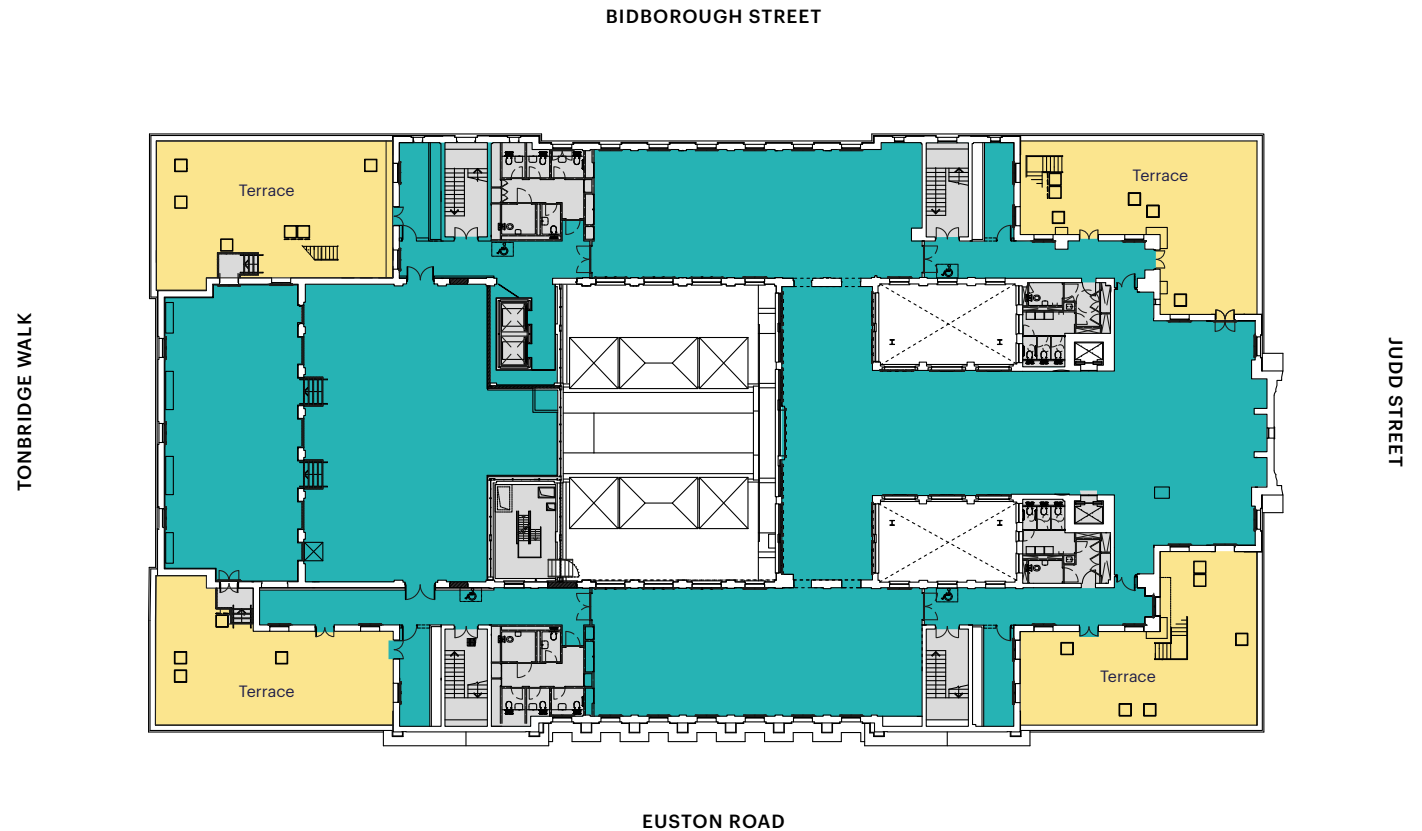
Floor	sq ft	sq m
Third	12,186	1,132
Second	15,457	1,436
Ground (Reception)	900	84
Lower Ground	8,550	794
Total	37,093	3,446

The building will be independently measured on practical completion to verify the floor areas stated above.

Affordable workspace provision
Occupiers should be aware that 20% of the total NIA is required to be SME affordable workspace.

Third

12,186 sq ft / 1,132 sq m



- Reception
- Office
- Communal bike racks/bike store
- Communal showers
- Terrace
- Covered outdoor spaces
- Shared corridor
- Core

Plans not to scale. For indicative purposes only.

